
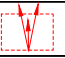


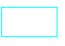

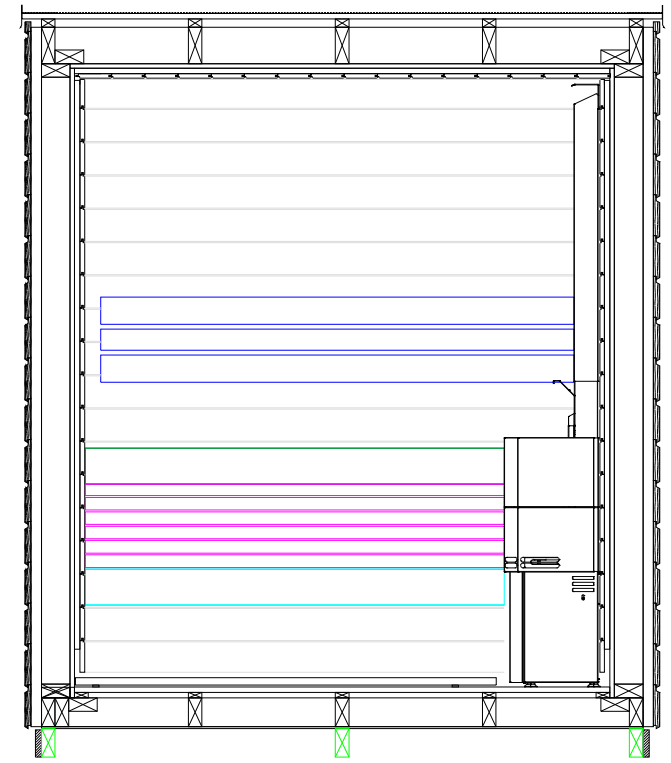
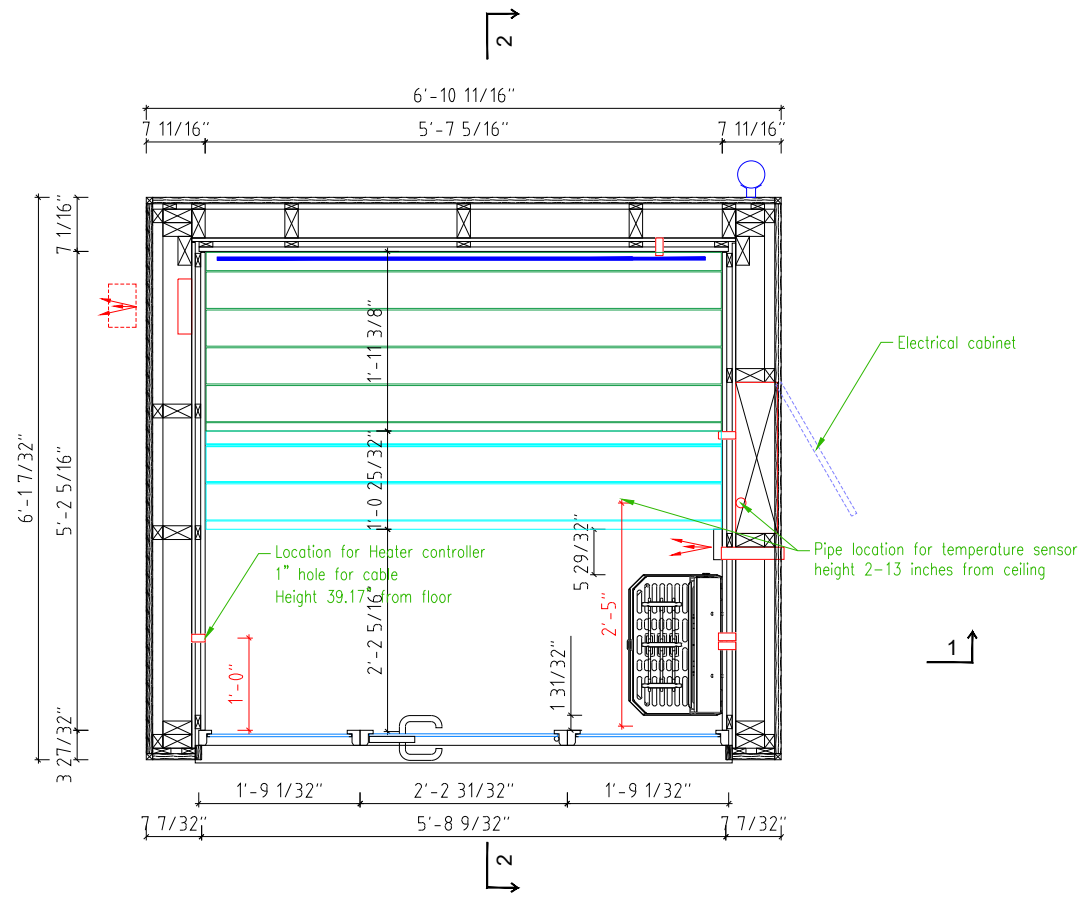


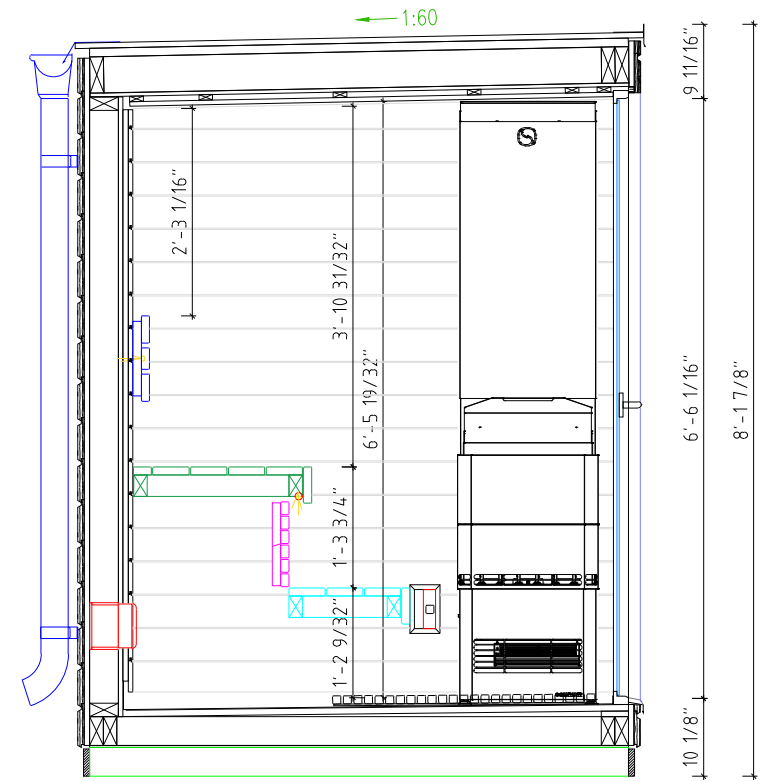
LEGEND	
	VENTILATION AIR INLET IN THE WALL (45*145)
	VENTILATION AIR OUTLET (d=100 mm)
	BACKREST
	UPPER BENCH
	LOWER BENCH
	GLASS




TECHNICAL INFORMATION

SIZE	WIDTH 6'-10 11/16" / DEPTH 6'-1 7/32" WEIGHT: 2205 lbs INTERNAL VOLUME: 187,2 ft ³ TRANSPORT SIZE: 7'-1 7/16" x 6'-5 3/16" H= 8'-4 9/16"
OUTSIDE HEIGHT	8'-1 29/32"
INSIDE HEIGHT	6'-5 25/32"
BASE BEAMS	IMPERGNATED WOOD
INSIDE WALL & CEILING PROFILE	STS4 0.591"x4.724" ALDER
OUTSIDE WALL PROFILE/MATERIAL	SAWN PINE HORIZONTAL 0.826"x5.708", (ANTRACITE)
INTERIOR MATERIAL	ALDER
INTERIOR	BENCHES, BACKREST, FLOOR GRIDS,
SAUNA DOOR	BLACK ALUMINIUM FRAME, GRAY 8mm TEMPERED GLASS
WINDOWS	BLACK ALUMINIUM FRAME, GRAY 8mm TEMPERED GLASS
HANDLE	BLACK ALUMINIUM WITH LOCK
HEATER	-
CONTROL UNIT	-
LIGHTING	LED STRIP BEHIND THE BACKREST AND UNDER THE UPPER BENCH (DOWN)
EXTRA	RAINWATER CUTTER SYSTEM, BLUETOOTH SPEAKERS, REMOTE CONTROLLED INTERIOR LIGHTS, SKIRT BETWEEN BENCHES
ACCESSORIES	-

SECTION 2-2



NB!
* Lights and ventilator controlled via a remote controller

 Saunum Sauna Team OÜ Registrakood: 14769342 www.saunateam.ee; info@saunum.com	PROJECT	Classic-mini		DRAWING	Plan, sections	
	ADDRESS	-	-	CONTRACT	-	SCALE 1:25
	DESIGNER	M.Ojamaa		DATE	01.03.2024	
	CHECK	M.Ojamaa		PAGE	1/1	
CODE	-	-	FORMAT	A3		