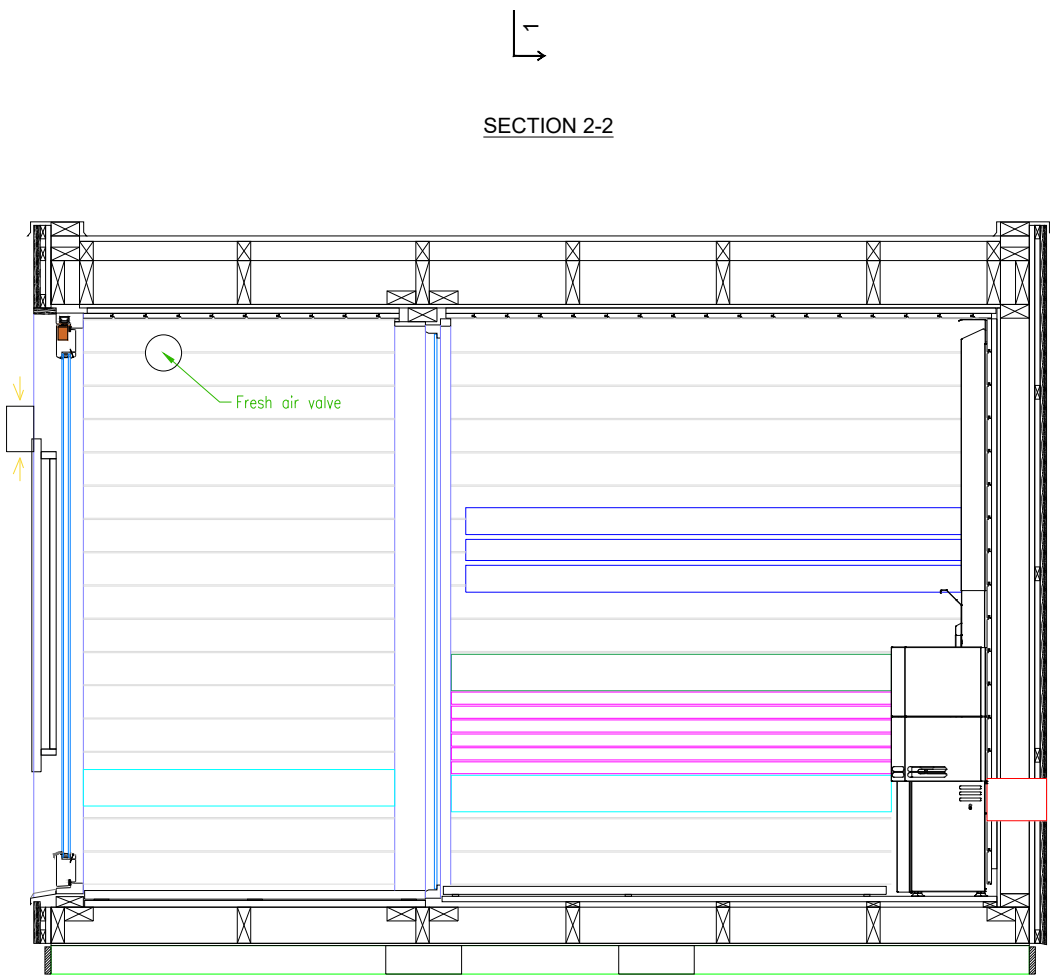
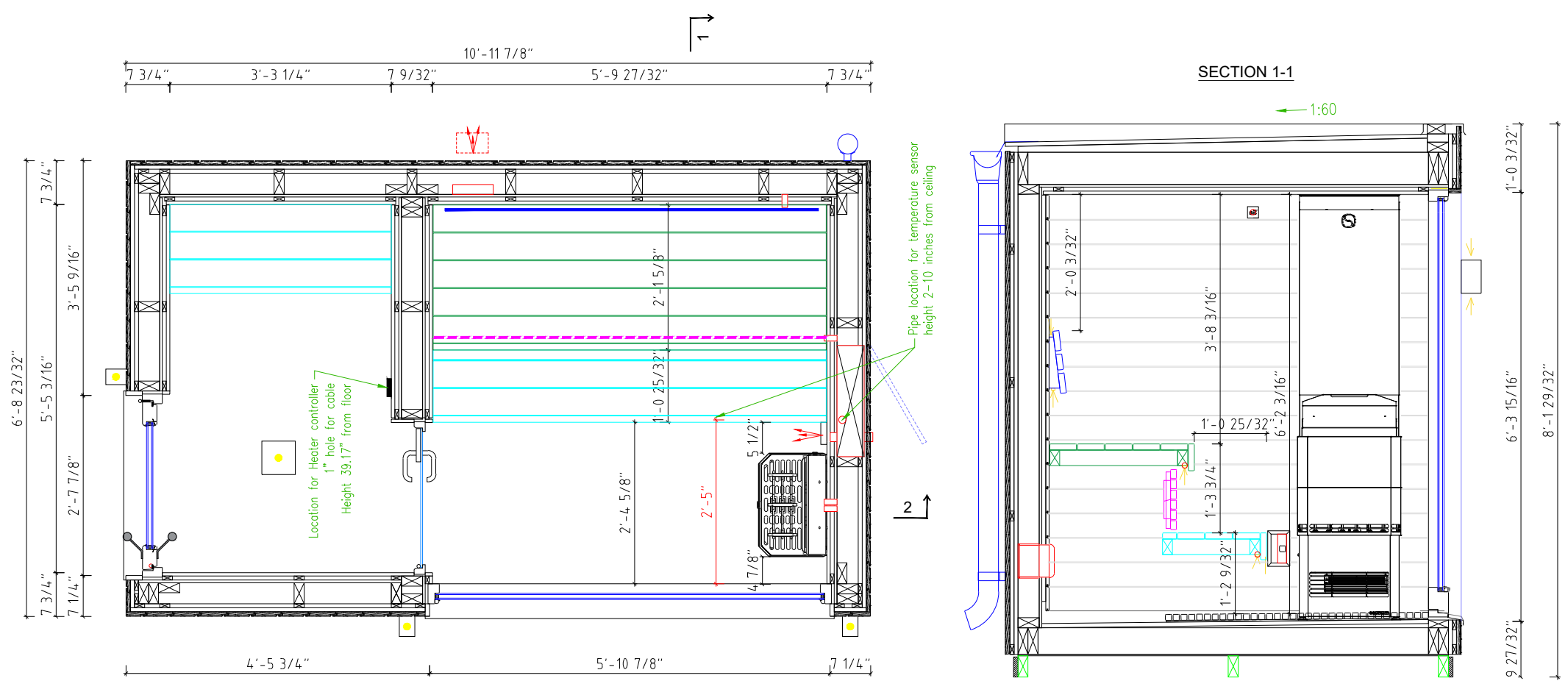


| LEGEND |  |
|--------|--|
|        | VENTILATION AIR INLET IN THE WALL (45*145) |
|        | VENTILATION AIR OUTLET (d=100 mm)          |
|        | UP/DOWN LIGHT                              |
|        | CEILING LIGHT                              |
|        | BACKREST                                   |
|        | BENCH SKIRTS                               |
|        | UPPER BENCH                                |
|        | LOWER BENCH                                |
|        | GLASS                                      |

| TECHNICAL INFORMATION         |   |
|-------------------------------|---|
| SIZE                          | WIDTH 10'-11 7/8" / DEPTH 6'-8 23/32"<br>WEIGHT: 4189 lbs<br>INTERNAL VOLUME: 194,2 m <sup>3</sup><br>TRANSPORT SIZE: 11'-2 5/8" x 7'- 5/8" H=8'-2 13/16" |
| OUTSIDE HEIGHT                | 8'-1 7/8"   |
| INSIDE HEIGHT                 | 6'-2 13/32"   |
| BASE BEAMS                    | IMPERGNATED WOOD  |
| INSIDE WALL & CEILING PROFILE | STS4 0.591"x4.724"  |
| OUTSIDE WALL PROFILE/MATERIAL | THERMO PINE VERTICAL 0.787"x5.512", (BLACK)<br>TERRACE CELLING THERMO PINE 0.787"x5.512" (TRANSPARENT COATING)  |
| INTERIOR MATERIAL             | ALDER   |
| INTERIOR                      | BENCHES, BACK GRID,<br>SKIRT BETWEEN UPPER AND LOWER BENCH<br>FLOOR GRIDS   |
| FRONT DOOR                    | CLEAR GLASS,<br>(4mm selective/security+20mm Ar+4mm security)<br>WOODEN FRAME (OUTSIDE: RAL8007; INSIDE: THERMO ASPEN)                                    |
| WINDOWS                       | CLEAR GLASS,<br>(4mm selective/security+20mm Ar+4mm security)<br>WOODEN FRAME (OUTSIDE: RAL8007; INSIDE: THERMO ASPEN)                                    |
| STEAMROOM DOOR                | CLEAR GLASS<br>ALUMINIUM BLACK FRAME, BLACK ALUMINIUM HANDLE  |
| HANDLE                        | NATURAL OAK / STAINLESS STEEL   |
| HEATER                        | -   |
| CONTROL UNIT                  | -   |
| LIGHTING                      | LED STRIPS BEHIND THE BACKREST (UP/DOWN) AND UNDER THE BENCHES (DOWN), CEILING LIGHT, UP/DOWN LIGHTS IN THE FRONT   |
| EXTRA                         | RAINWATER CUTTER SYSTEM, BLUETOOTH SPEAKERS, LIGHTS CONTROLLED WITH REMOTE  |
| ACCESSORIES                   | -   |



|   |          |                |      |            |                |            |
|---|----------|----------------|------|------------|----------------|------------|
| <br>Saunum Sauna Team OÜ<br>Registrikood: 14769342<br>www.saunateam.ee; info@saunum.com | PROJECT  | AirCube Double |      | DRAWING    | Plan, Sections |            |
|   | ADDRESS  | -              | -    | CONTRACT   | -              | SCALE 1:25 |
|   | DESIGNER | M.Ojamaa       | DATE | 23.04.2024 | FORMAT         | A3         |
|   | CHECK    | M.Ojamaa       | PAGE | 1/1        |                |            |